



Planar CarbonLight CLI VX Series

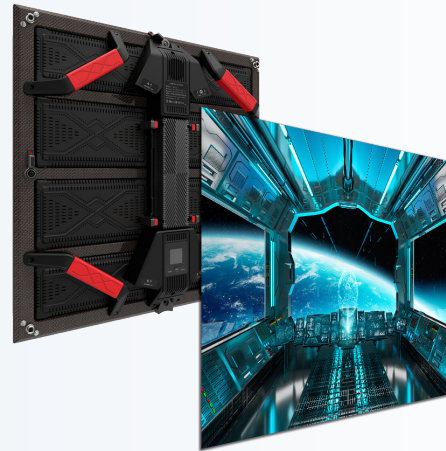
Indoor LED Video Wall

1.9 & 2.6mm pixel pitches

HDR ready

Compatible with Brompton & Colorlight

Hang, wall mount or free stand

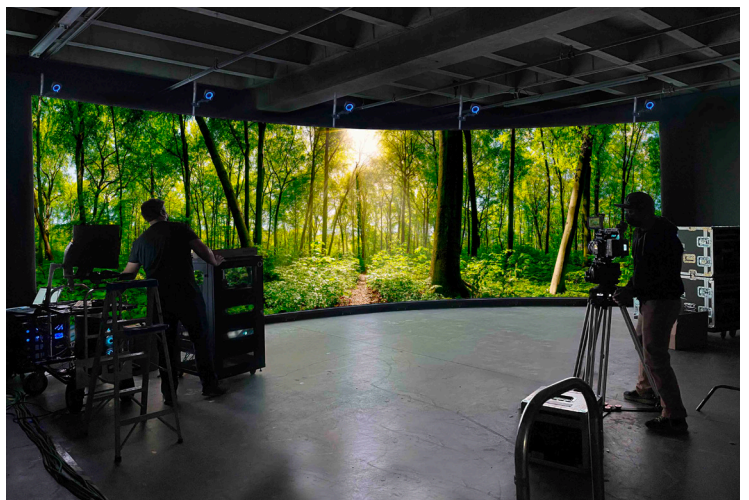


Planar® CarbonLight™ CLI VX Series is a carbon fiber-framed indoor LED video wall with exceptional on-camera and in-camera visual properties and deployment versatility for a variety of installations, including virtual production and extended reality. Its wide color spectrum, narrow 1.9 or 2.6mm pixel pitches and fast frame and refresh rates deliver excellent in-frame and in-person visual performance. The Planar CarbonLight CLI VX Series shortens the distance a camera needs to avoid moiré effect and other artifacts. The thin, carbon fiber-framed 500x500mm displays can be hung, wall mounted or free stand. The displays have beveled edges to support 90° corners and can facet for curved walls. Purpose-built bracketry enables quick assembly and teardown for fast-paced applications.

Lights, Camera, Action!

Planar CarbonLight VX Series' visual and mechanical properties are conducive to cinema and broadcasting as in-camera background scenes. The displays beautifully supplement green screens and integrate with VP/XR volumes.

Average in-person viewers can feel comfortable viewing the video wall from as close as 10 ft. without seeing individual pixels, while those seeing it in media will feel enveloped in the scene as if they were on location.





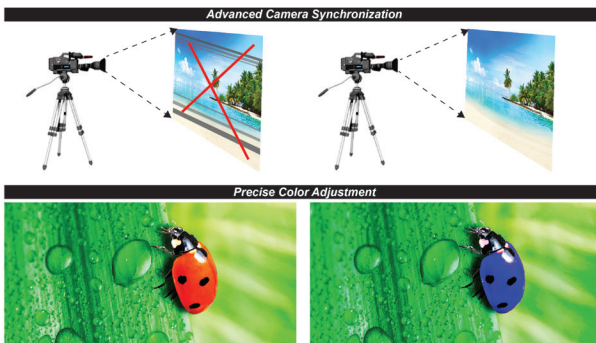
Wide Color Gamut

The displays facilitate precise color adjustment to fine tune colors, correct dark scenes and enhance imagery with a larger percentage of the visible color spectrum. They support on-camera video applications requiring wider color gamut, including Rec. 709 and DCI-P3.



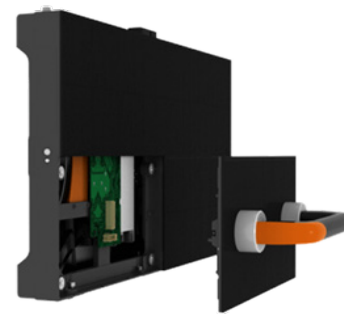
HDR Ready

Displays are ready for High Dynamic Range content with support for both HDR10 and the less common HLG formats. They maximize the image quality of each pixel for brighter whites, darker blacks and more true-to-life colors.



Camera Ready

Planar CarbonLight CLI VX Series has advanced Genlock capabilities to ensure it can synchronize with a variety of cameras. Models are compatible with typical frame rates between 23.5Hz and 152Hz, and frame multiplication, virtually eliminating common video recording challenges.



Easy Access

Individual LED cabinets can be removed and installed anywhere within the video wall or floor without disrupting the overall layout, while front-side, or top-side, service makes module extraction simple for maintenance.

Processing Prowess

Planar CarbonLight CLI VX Series has the essential features broadcast and film production companies require for today's on-camera display needs. It is compatible with multiple video controller processing options from Brompton Technology® and Colorlight.

Benefits and functions include:

- Exceptionally Accurate Color
- High Dynamic Range
- Smooth Motion with Low Latency
- Frame Remapping
- Grayscale Trimming





Planar Studios

Planar CarbonLight CLI VX Series LED video walls the cornerstones of the Planar Studios initiative, an effort to accelerate Virtual Production and Extended Reality (VP+XR) capabilities and make them more accessible, streamlined and repeatable. Planar Studios empowers visual storytellers to bring their creative visions to life with key technology partnerships, dedicated expert teams, and advanced on-camera display solutions.

Planar Studios is aligned with top creative and technical experts in VP+XR specializing in areas that include motion tracking, digital production and imaginative visual storytelling. These collaborative partnerships integrate the products, organizations and people that creative producers need to create realistic, on-screen content in today's VP+XR settings.

Applications:

- Virtual Production
- XR Stages & Studios
- Live Events
- Broadcasting
- Corporate
- Education & Training



Specifications

Planar CarbonLight CLI VX	CLI VX1.9	CLI VX1.9 B	CLI VX2.6	CLI VX2.6 B
Pixel Pitch	1.95mm		2.6mm	
Cabinet Resolution	256 x 256		192 x 192	
Cabinet Size (W x H x D)	500 x 500 x 63mm 19.69 x 19.69 x 2.48in			
Power Consumption, Max (watts)	225/Cabinet 900/m ²			
Power Consumption, Typical (watts)	150/Cabinet 300/m ²			
Line Voltage	100-240V AC, 50/60Hz			
Cabinet Weight (per display)	4.1kg 9.04lbs			
Brightness (cd/m²)	1,500			
LED Refresh Rate	7680Hz			
Scan Ratio	1:8		1:16	
Frame Rate (processor dependent)	23.5 - 152Hz		24 - 144Hz	
Color Temperature, Adjustable (k)	3,000-10,000 adjustable			
Viewing Angles	140° Horizontal, 140° Vertical			
Installation and Service Access	Front (modules), Rear			
Gray Scale Processing	16bit			
Power Supply	Single			
Operating Temperature/Humidity (degrees F/C, relative humidity)	-20° to 40° C -4° to 104° F, 10-80%			
Storage Temperature/Humidity (degrees F/C, relative humidity)	-35° to 60° C -31° to 140° F, 10-80%			
LED Lifetime, Typical	100,000 hours			

For more information visit: www.planar.com/carbonlight-vx

Planar is a trademark of Planar Systems, Inc. All other trademarks and service marks are property of their holders. Copyright © 2023 Planar Systems, Inc. All rights reserved. This document may not be copied in any form without permission from Planar. Information in this document is subject to change without notice. 11/2025